



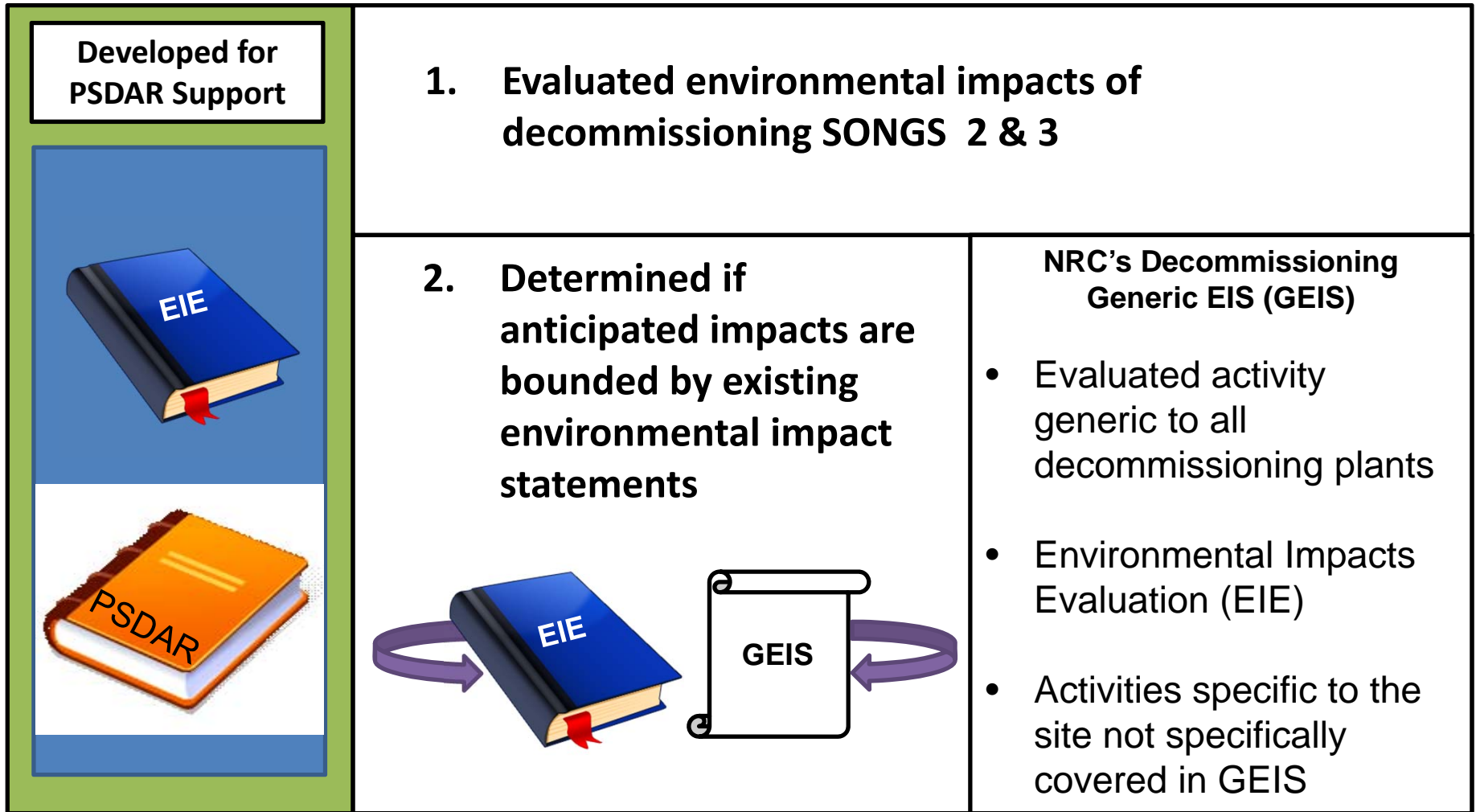
Environmental Impact Evaluation (EIE)



Community Engagement Panel

07/17/14

Purpose



EIE Assumptions and Structure

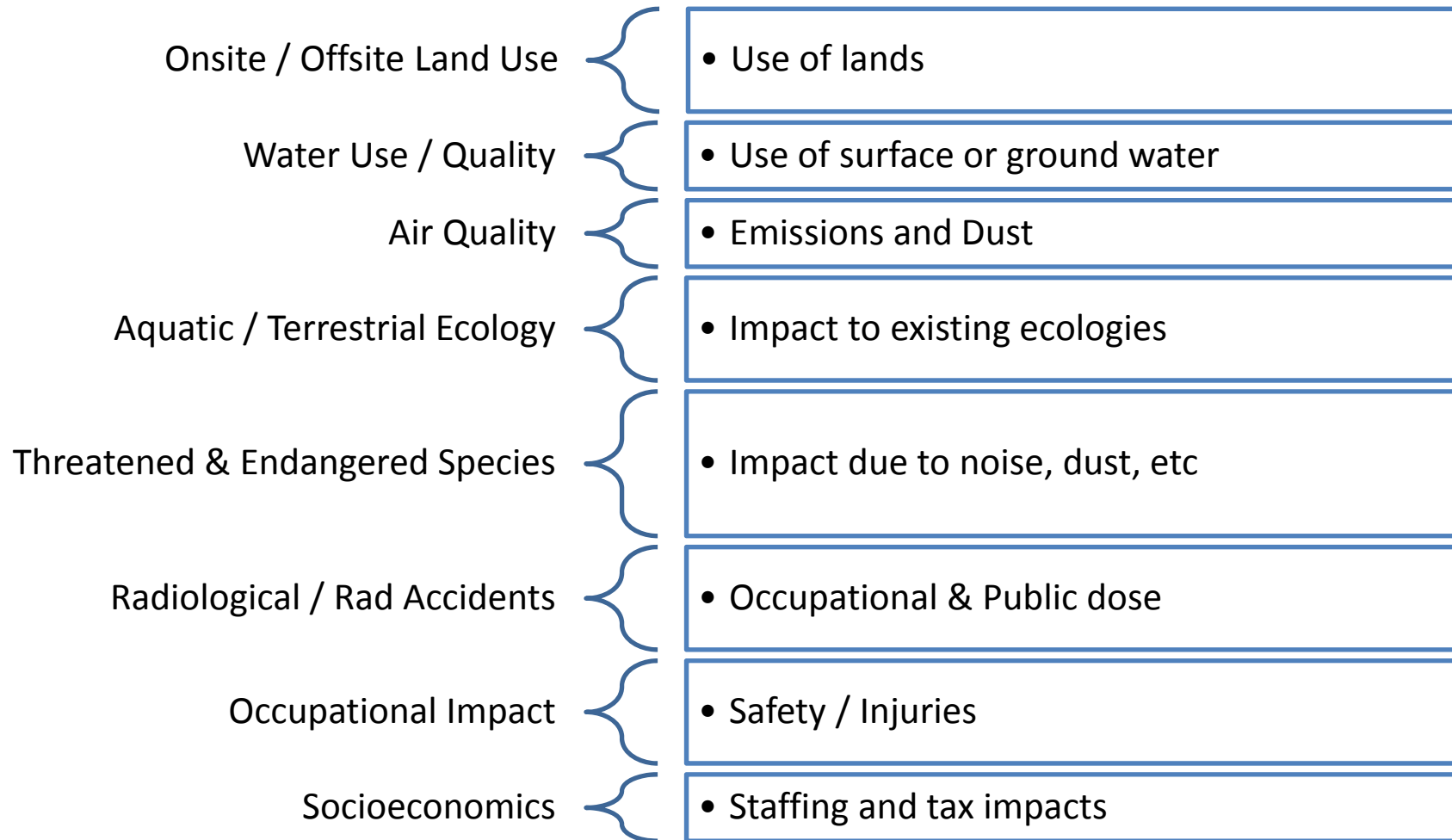
Assumptions

Operational mitigation measures would be continued
Did not rely on implementation of new mitigation measures unless specified

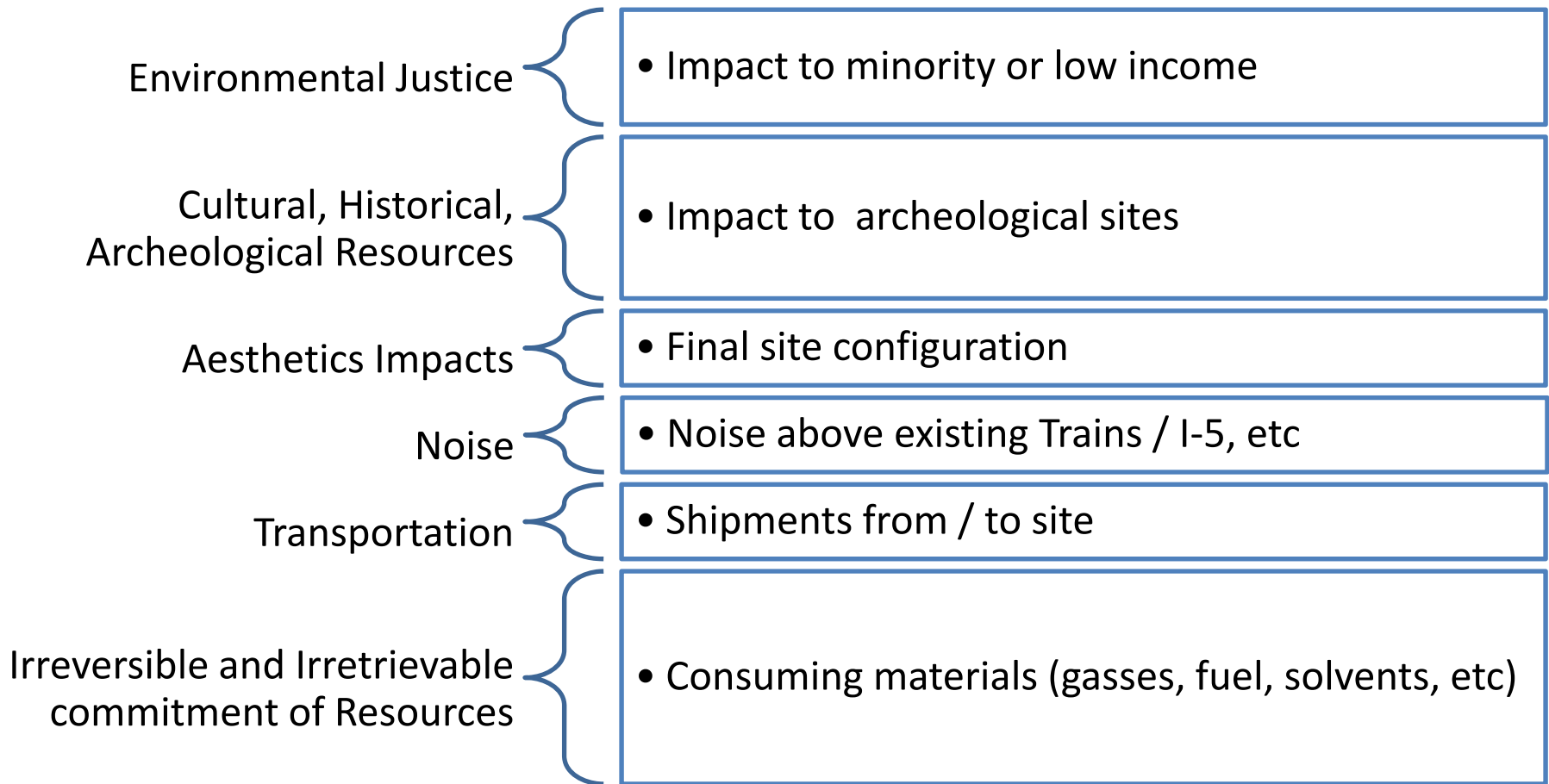
Structure

- Onsite / Offsite Land Use
- Water Use / Quality
- Air Quality
- Aquatic / Terrestrial Ecology
- Threatened & Endangered Species
- Radiological / Rad Accidents
- Occupational Impact
- Socioeconomics
- Environmental Justice
- Cultural, Historical, Archeological Resources
- Aesthetics Impacts
- Noise
- Transportation
- Irreversible and Irrecoverable commitment of Resources

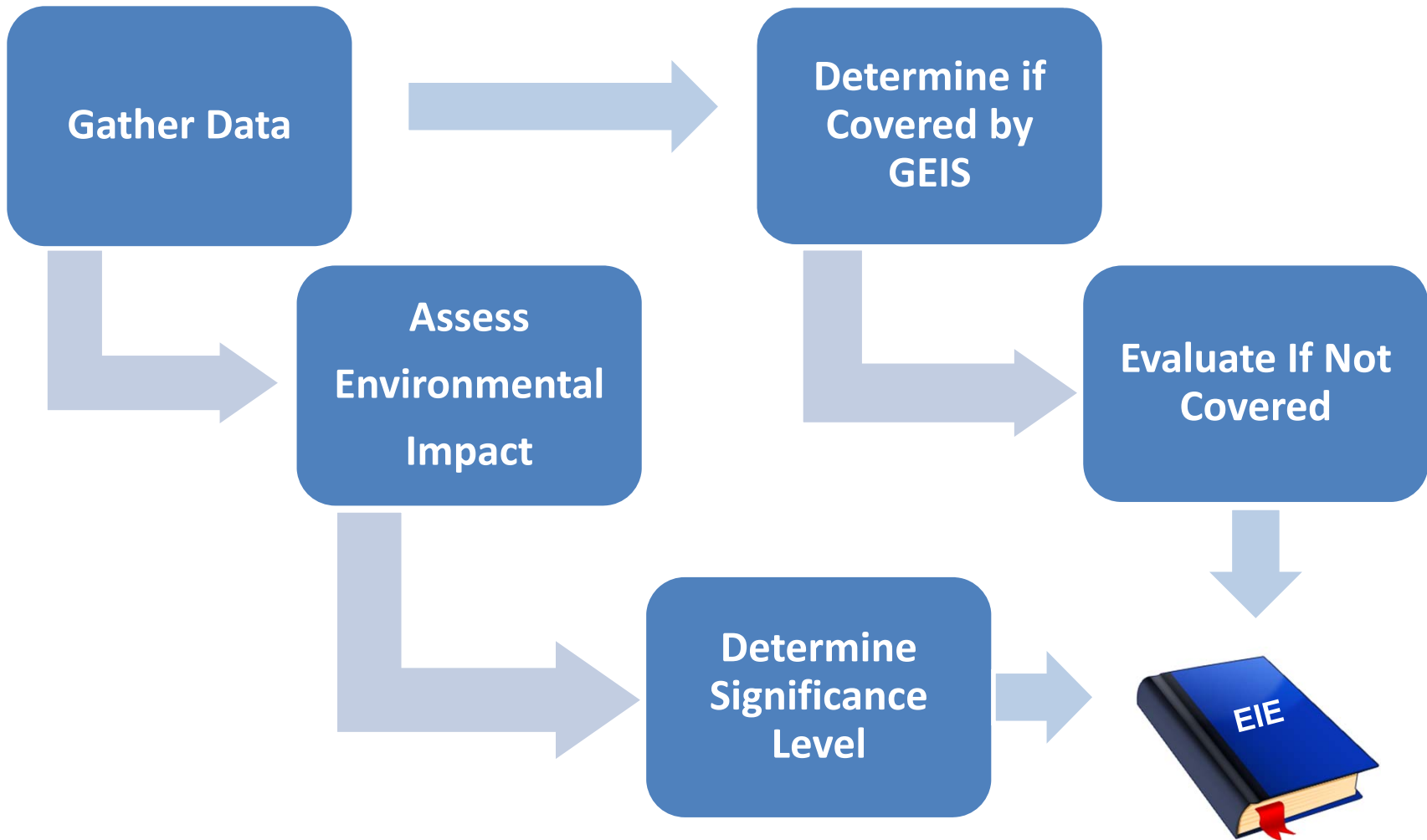
Resource Impact Areas Assessed



Resource Impact Areas Assessed



Methodology Flow Chart



Methodology Blocks Explained in Next Slides

Methodology

Gather
Data

- Environmental Releases
- Waste Volumes
- Environmental Interfaces

Methodology

Assess for Environmental Impact

- Baseline established for environmental and social conditions through site specific info and regional data
- Consideration of existing permit conditions and limitations for
 - Water and air permits
 - Dose, effluents, and radioactive waste shipping NRC regulatory requirements
- Consideration for federal, state, and local requirements for non radiological interfaces including
 - water withdrawal and discharges
 - air emissions including fugitive dust
 - noise levels
 - protection of aquatic and terrestrial species
 - protection of cultural resources
 - disposal of non rad waste, and
 - worker health protection

Methodology

Determine Significance Level

- **SMALL**
Environmental impacts are not detectable or are so minor that they will neither destabilize nor noticeably alter any important attribute of the resource; (does not trigger additional Environmental Report (ER) or License Amendment Request (LAR))
- **MODERATE**
Environmental impacts are sufficient to alter noticeably but not to destabilize important attributes of the resource; (requires additional ER or may potentially require a LAR)
- **LARGE**
Environmental impacts are clearly noticeable and are sufficient to destabilize; (requires additional ER and LAR)

Methodology

Determine if
Covered by
GEIS

- Compares EIE Results to GEIS for each resource impact area for decommissioning activities
- Determines if existing GEIS is bounding for each impact area during decommissioning activities

Methodology

Evaluate If Not Covered

- If it is determined that the EIE is not bounding as described in the GEIS for any of the resource impact areas additional review is done

Conclusion



- Serves as required supporting document for environmental impact section (V) of PSDAR
 - Detailed executive summary of EIE
 - Confirms that the Generic Environmental Impact Statement for decommissioning nuclear power plant sites is bounding
 - NRC expected to review and can request further info from full EIE
- Presents SCE's review of environmental impacts of decommissioning SONGS 2 &3 and determines if impacts are bounded by existing environmental reports