



Decommissioning
San Onofre
Nuclear Generating Station

Wheeler North Reef Update

September 15, 2016

Steve Schroeter, Ph.D.
Ecologist

UCSB, Marine Science Institute

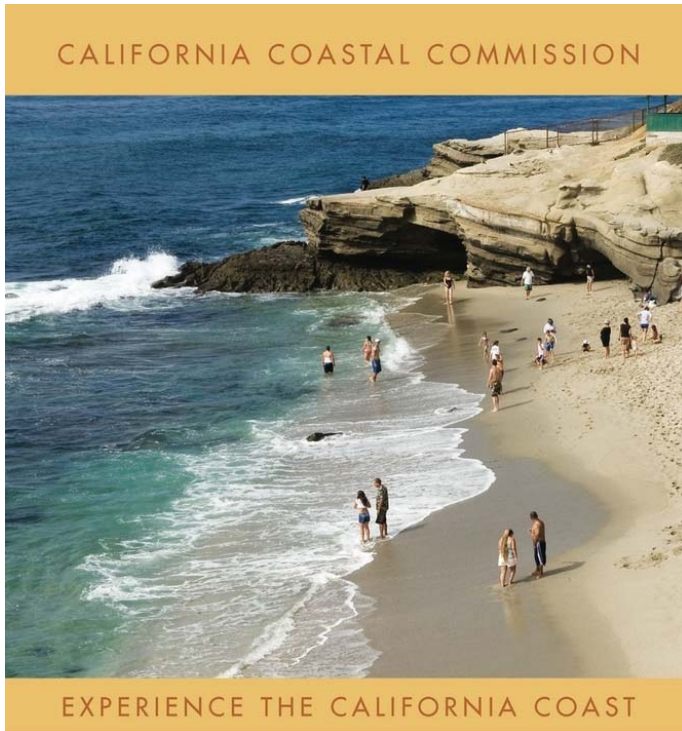
Update of Status of Wheeler North Reef



September 15, 2016

**SONGS Mitigation Monitoring Project
Marine Science Institute, University of California Santa Barbara**

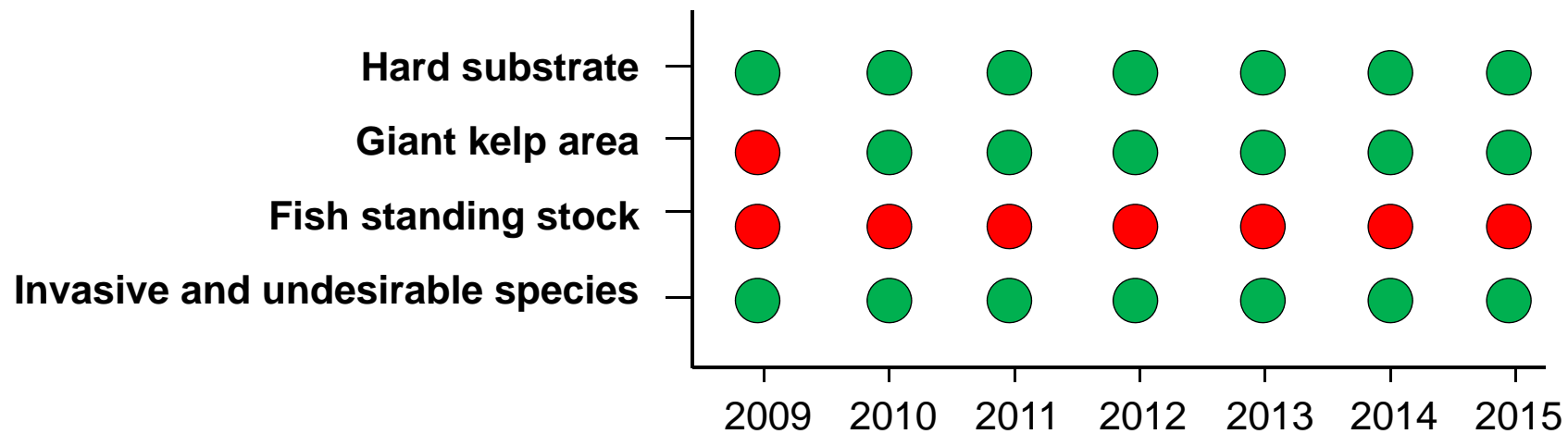
The California Coastal Act Requires Mitigation of Marine Impacts



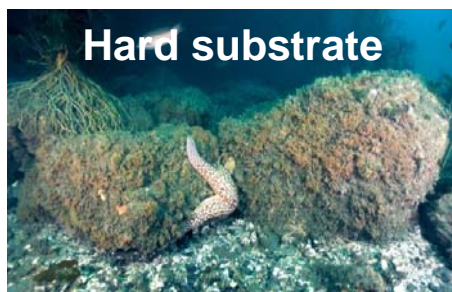
As mitigation for the impacts to the San Onofre kelp forest caused by SONGS the CCC required SCE to:

1. Construct an artificial reef that creates a minimum of 150 acres of kelp forest habitat to compensate for losses of kelp and kelp bed fish and invertebrates.
2. Provide funding for scientific oversight and monitoring of the mitigation project that is *independent* of SCE.
3. Monitoring entails evaluation of 15 performance standards: 4 Absolute and 11 Relative standards

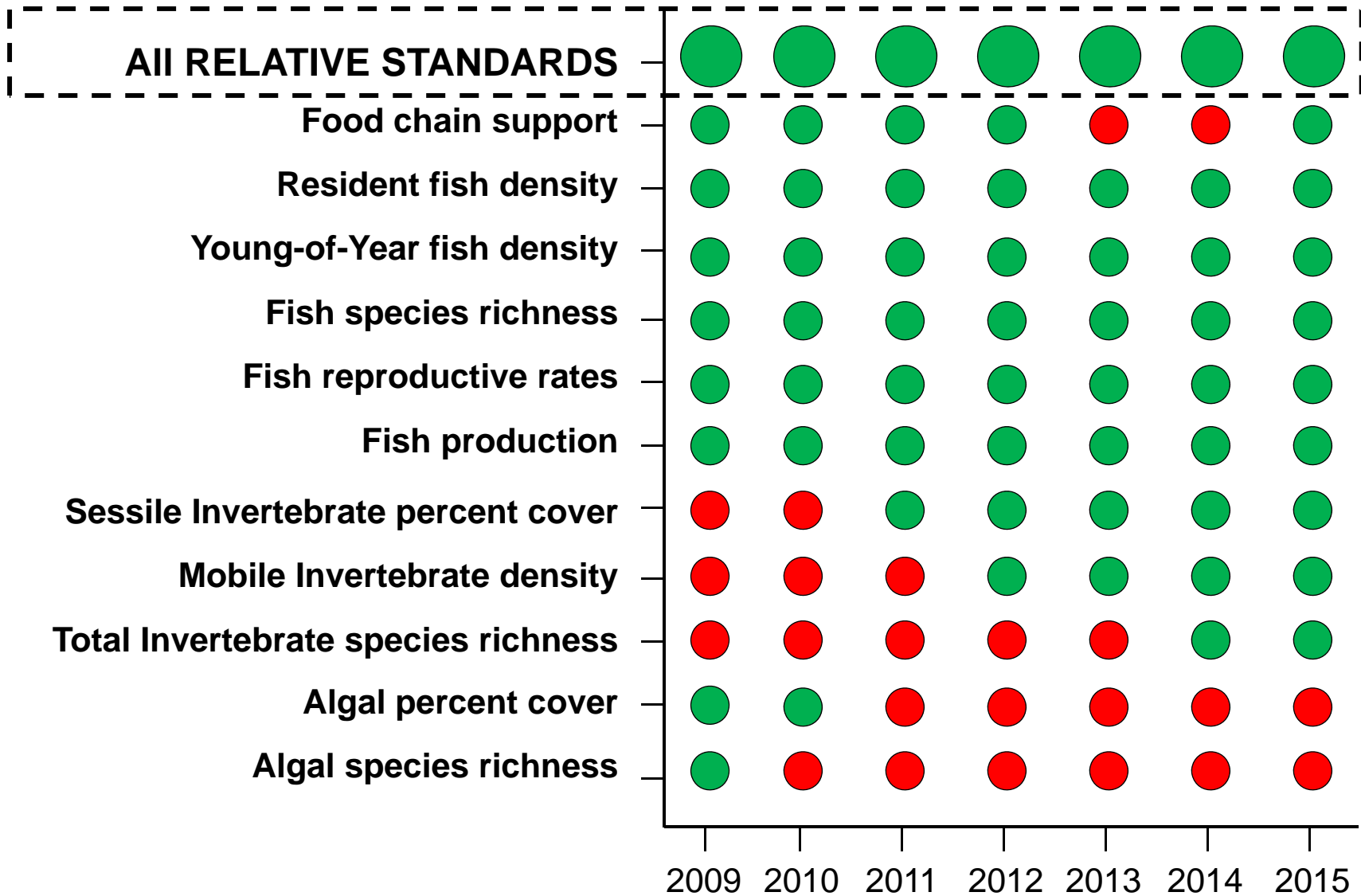
Four Absolute Performance Standards



● Standard met ● Standard not met

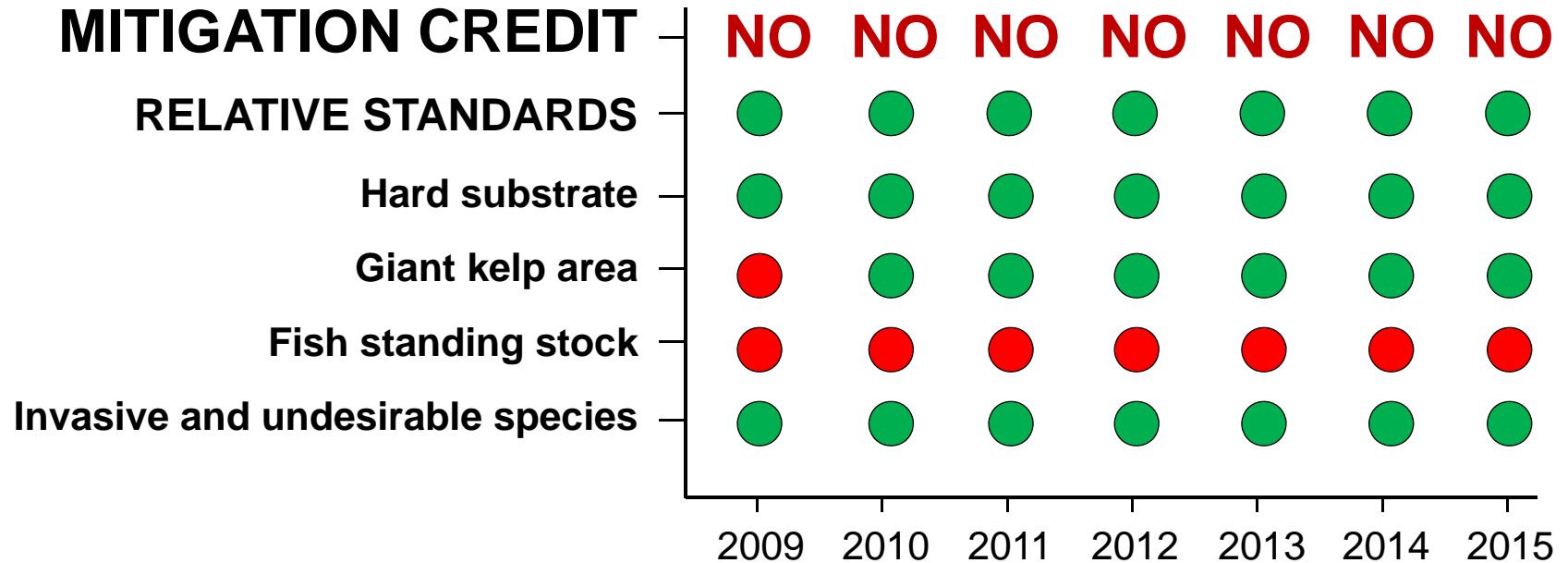


11 Relative Performance Standards



● Standard met ● Standard not met

Status of WNR & Project Compliance



● Standard met ● Standard not met

Number of years of credit *needed* ~ **33**

Number of years of credit *earned* = **0**