



# Community Engagement Panel

March 25, 2014

# Decommissioning Principles

---

**With our co-owners, Southern California Edison is committed to:**

## Safety

- Safely decommissioning San Onofre
- Safely move the power plant's spent fuel into dry cask storage, until government approved long-term storage options are available

## Stewardship

- Leave the community better off
- Spending Nuclear Trust Funds wisely
- Return any unused monies to ratepayers

## Engagement

- Decommissioning process is inclusive, forward-thinking , involving diverse stakeholders

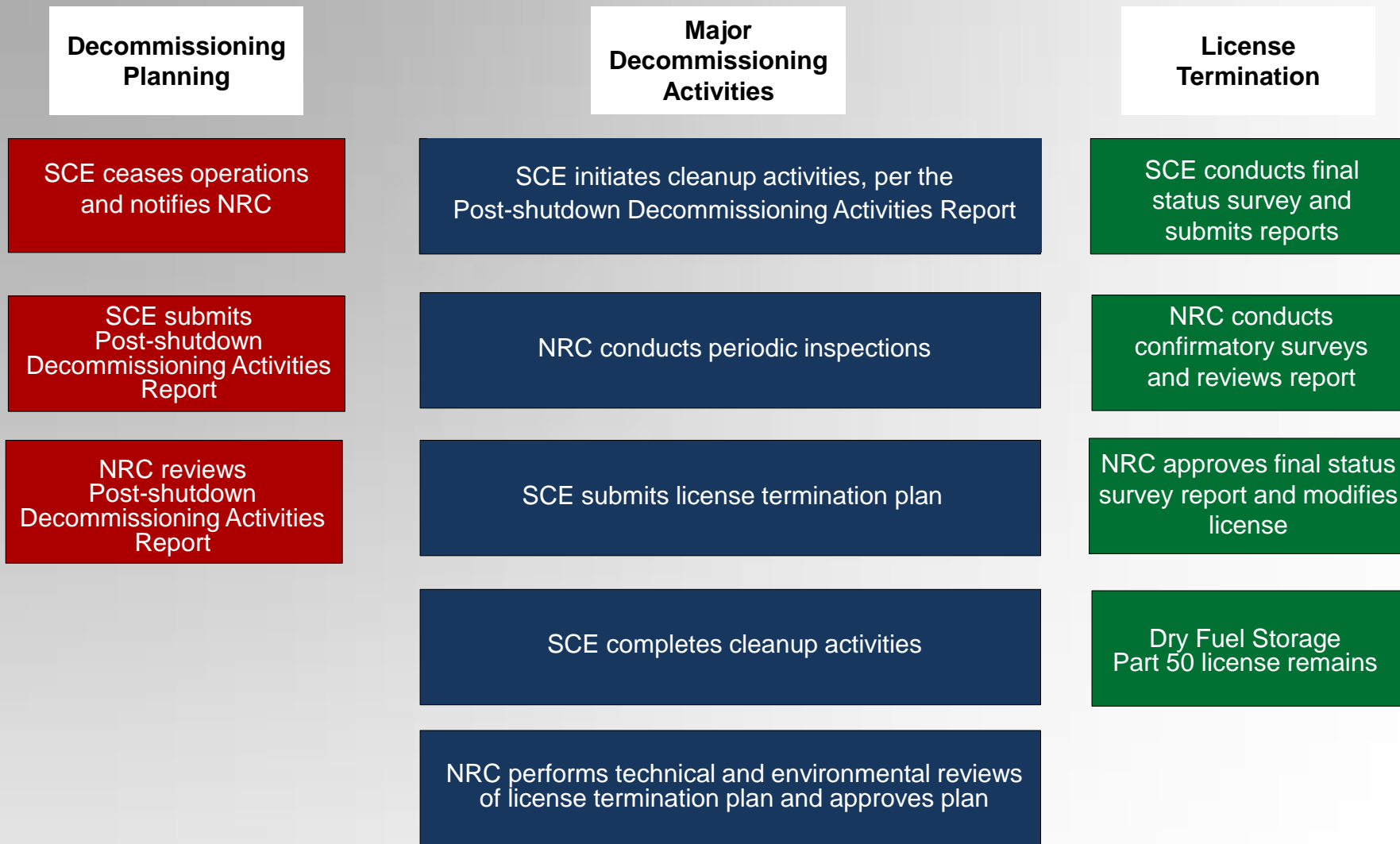
# Current Plant Status

---

- June 7, 2013 - Decision to Shutdown
- June 12, 2013 - Certification of Permanent Cessation of Power Operations
- July 22, 2013 - Certification of Permanent Removal of Fuel
- Operating License Modified
  - No longer authorized to operate the reactors
  - No longer authorized to place fuel in the reactors
  - “Possession only” license

# NRC Requirements

## Three Phases of Decommissioning



# Nuclear Regulatory Commission Submittals

---

- **Post-shutdown Decommissioning Activities Report (PSDAR)**

Identifies the planned decommissioning activities, a schedule for the completion of these activities, estimate of the expected costs, and environmental impacts associated with the site-specific decommissioning activities

- **Irradiated Fuel Management Plan (IFMP)**

Description of Spent Fuel storage management and funding plan

- **Decommissioning Cost Estimate (DCE)**

Provides funding levels and process through the decommissioning periods

- **Permanently Defueled Emergency Plan (PDEP)**

Description of station Emergency Plan and Emergency response organization commensurate with decommissioned conditions of the plant

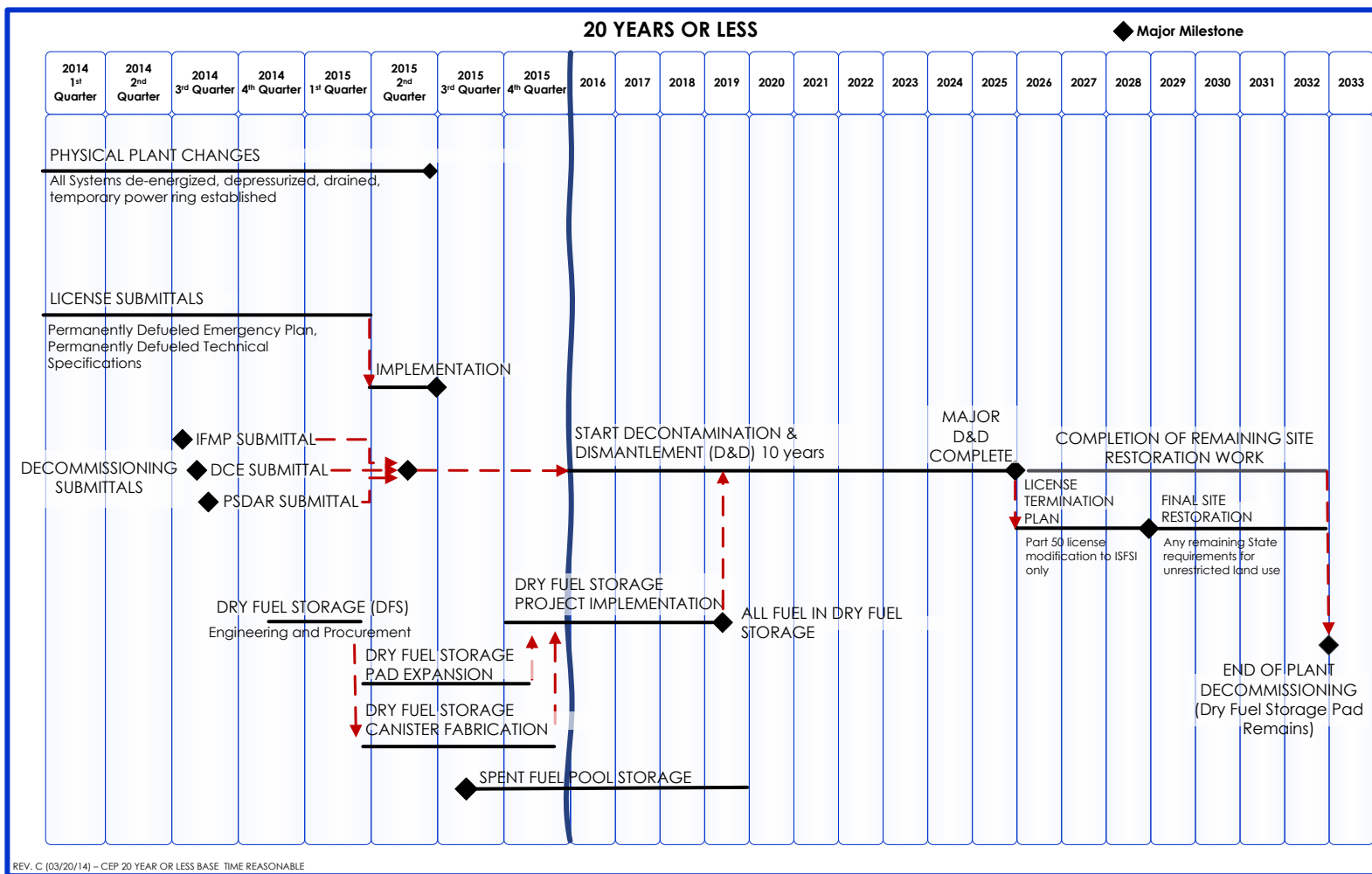
- **Permanently Defueled Technical Specifications (PDTS)**

License basis for current defueled condition of the station

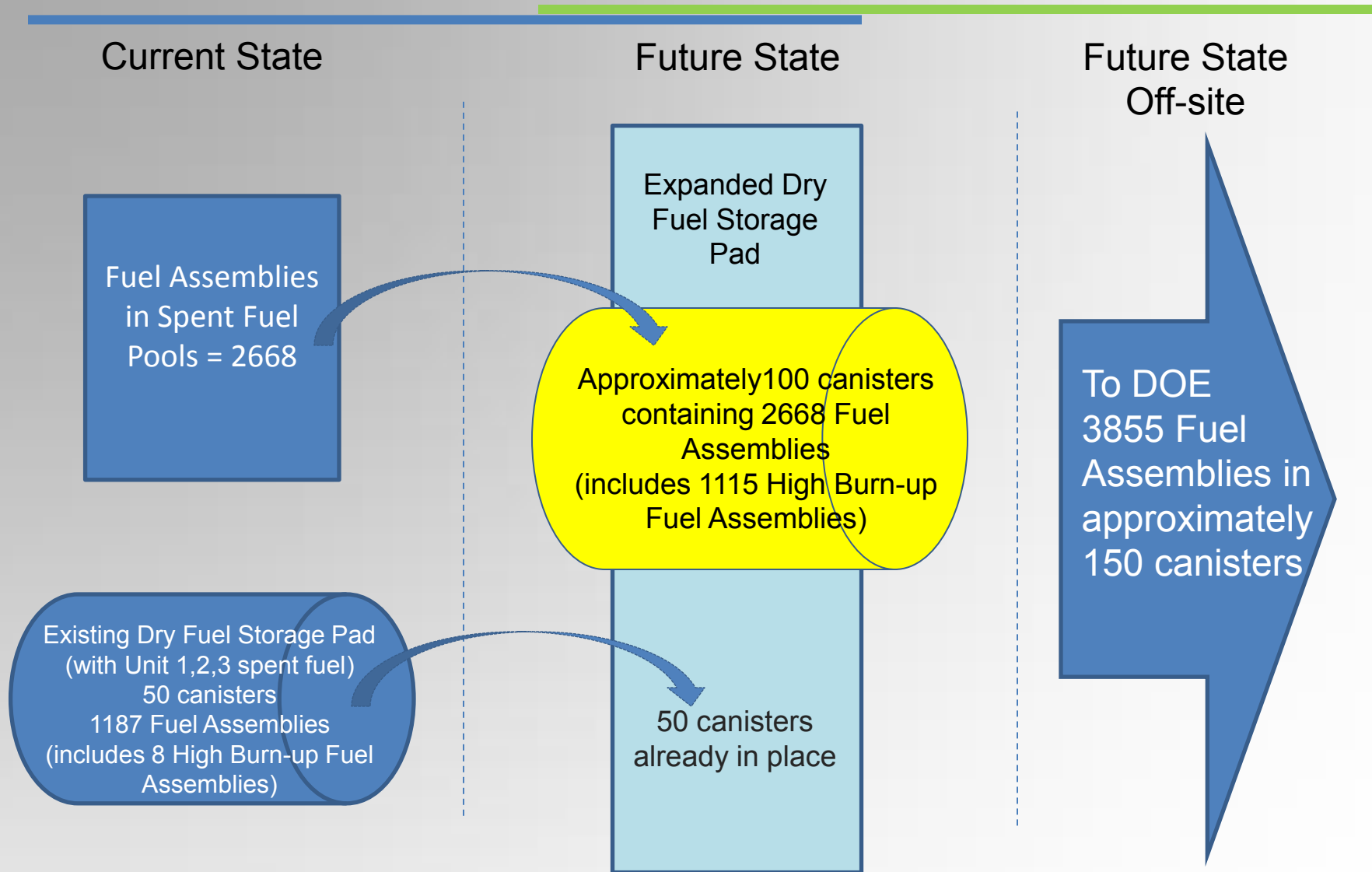
# Proposed Decommissioning Schedule

Submittal	Target Date	Community Engagement Panel
Post-shutdown Decommissioning Activities (PSDAR)	3Q2014	Feedback
Irradiated Fuel Management Plan (IFMP)	3Q2014	Feedback
Decommissioning Cost Estimate (DCE)	3Q2014	Feedback
Permanently Defueled Emergency Plan (PDEP)	1Q2014	Awareness
Permanently Defueled Technical Specifications (PDTS)	1Q2014	Awareness

# Proposed Decommissioning Schedule

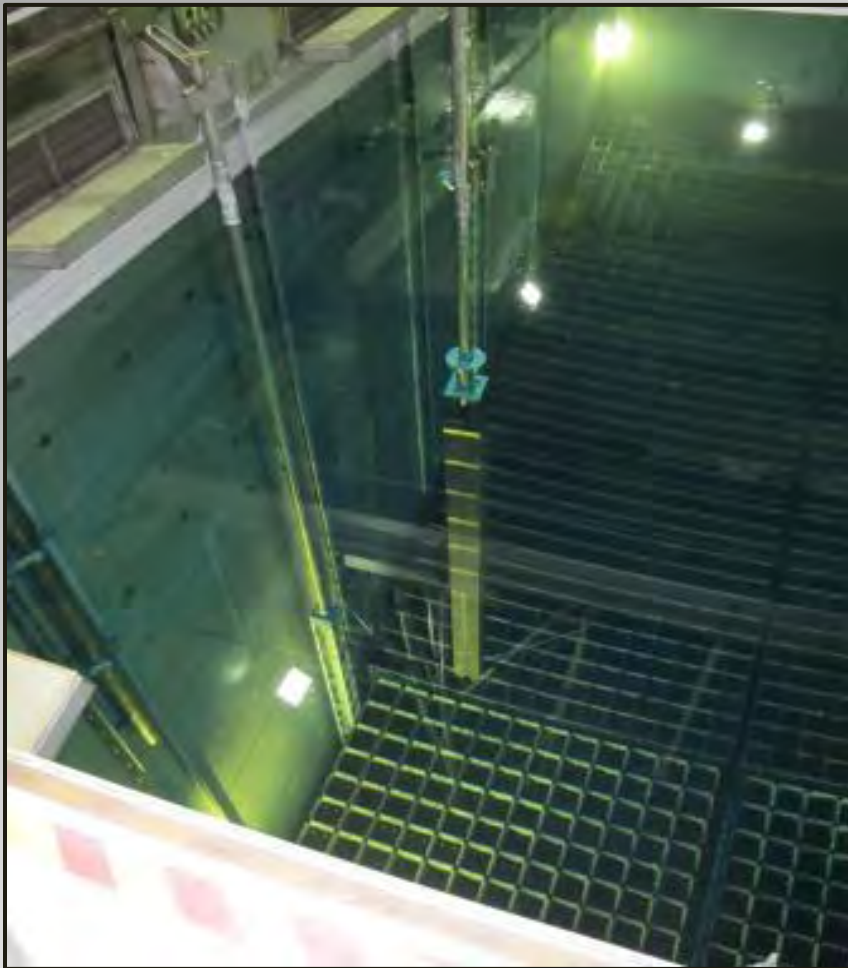


# Spent Fuel Storage

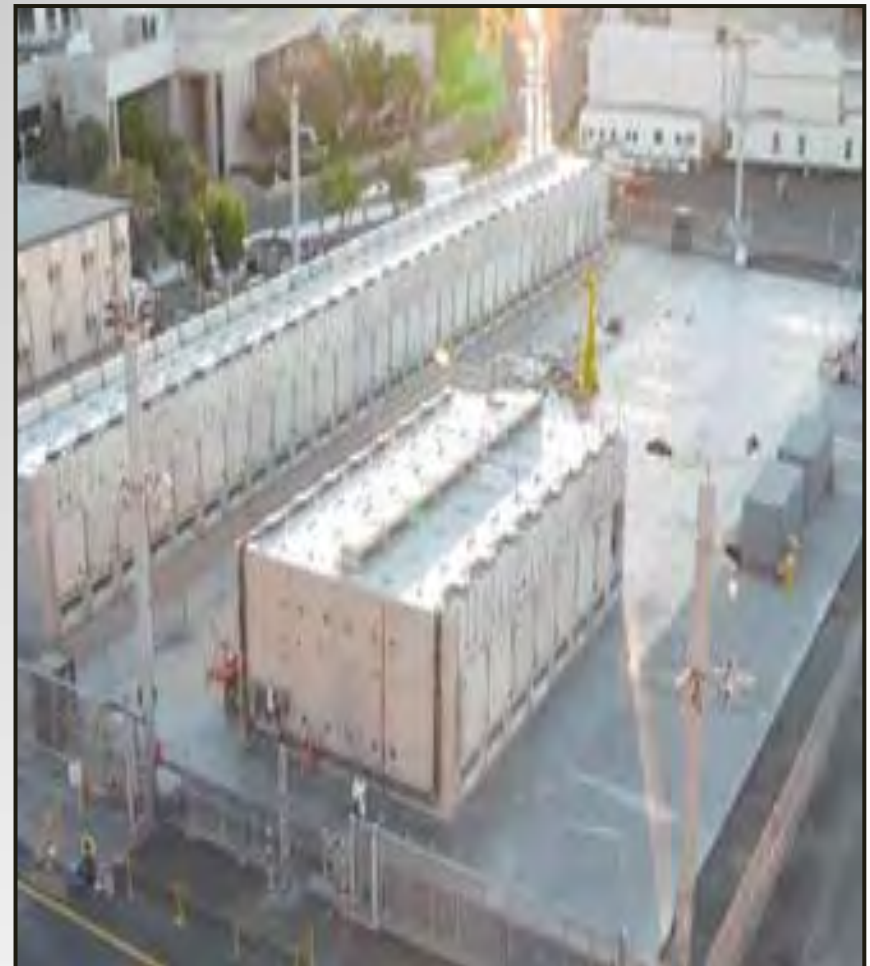




# Spent Fuel Pool to Dry Fuel Storage



# Dry Fuel Storage



# Trust Fund and Regulatory Oversight

## SCE Decommissioning Trust Committee

- The Nuclear Decommissioning Trusts are overseen by a five member committee (2 internal 3 external) who are nominated by management, confirmed by the Edison Board, and approved by the CPUC. Responsibilities include:
  - Prudently manage the investments in the Trust
  - Approve asset allocation based on expected decommissioning schedule provided by the company
  - Hire and manage investment advisors and trustee
  - Hire and manage other advisors as appropriate

## Regulatory Oversight of Decommissioning Trusts

- California Public Utilities Commission (CPUC) regulates all spending from the Nuclear Decommissioning Trust, including review, approval, and reasonableness
  - Filed a request for interim access to the Trust in November 2013
  - Will file an application for permanent approval with site specific Decommissioning Cost Estimate (DCE) in 2014
- Nuclear Regulatory Commission (NRC) regulates all radiological decommissioning
- NRC regulates Spent Fuel Management



# San Onofre Lease



## Navy Lease

- Established in 1983 to support San Onofre
- Land comprised of five parcels/135 acres
- Period of lease through 2023

# San Onofre Easement



## Navy Easement

- Established in 1964
- Land comprised of 85 acres, coastal site west of Interstate 5
- Term of the easement through 2023
- Need to extend the easement through decommissioning
- Need to clarify Navy expectations for return of property

# **Decommissioning Principles**

**Safety**

**Stewardship**

**Engagement**